

# Guide ~ How to change the chip

The ECU is located in following places.

- Bmw E30 ECU is in the upper part of the glovebox.
- Bmw E34, E32 ECU is inside a black plastic box under the hood, passenger side.
- Bmw E36 ECU is behind a hatch from engine backside wall against passenger side.

Bmw engines newer than 95 has no stand alone chips. This ECU's has to be sent to us and reprogrammed.

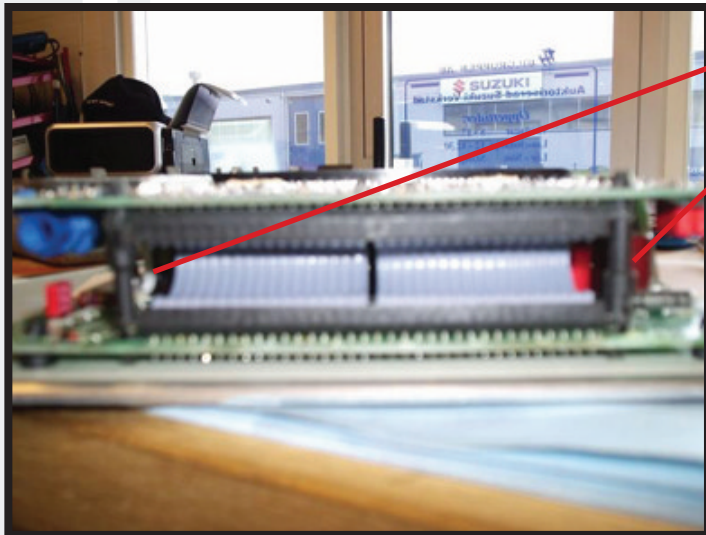
1. Open the ECU by pushing the small clips as per image



If it's not the double version of the box as in image above, you can go directly to step 5.

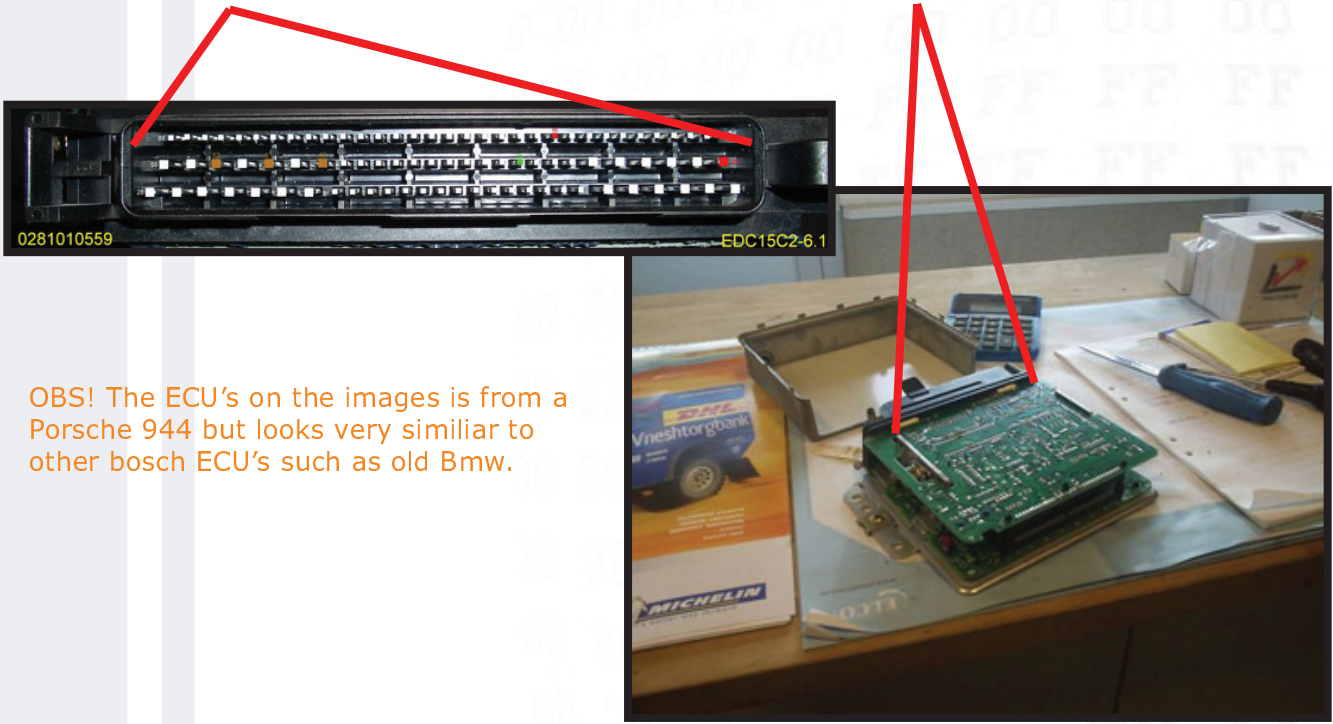
2. Remove the small plastic stick which is in the middle of the curcutboard.

Then loosen the small hatches shown in image below, at both side of the gray cablebands.



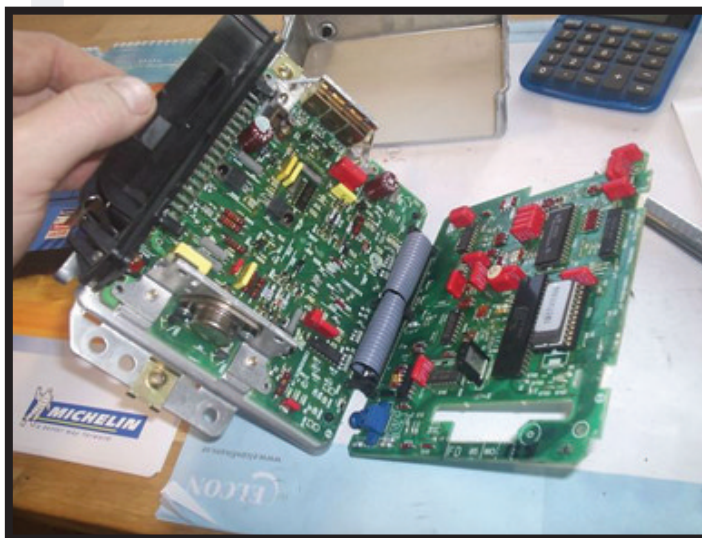
3. Now comes the harder part :)

First you have to part the circuitboards from each other so that the gray cableband now is tensed. This has to be done in same time as you open the small clips as per image below, in each edge. Also you may need to push the small clips as per next image and then you can turn the circuitboard out backwards.



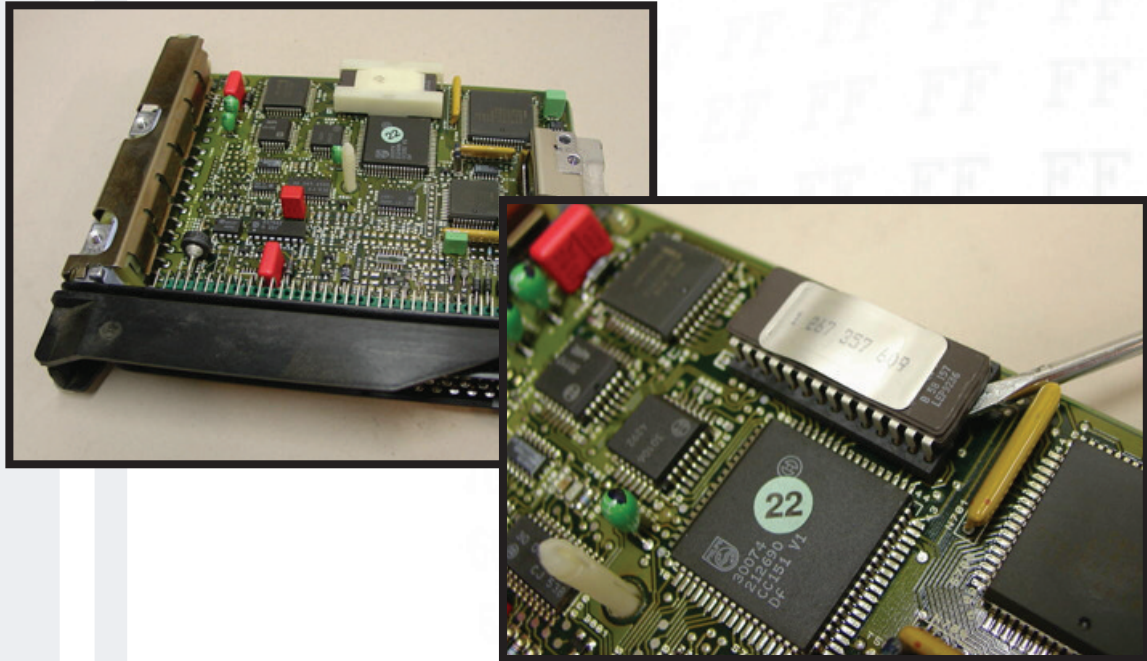
OBS! The ECU's on the images is from a Porsche 944 but looks very similar to other bosch ECU's such as old Bmw.

4. In the same time as the above step is done and you push the circuitboard backwards from the pinouts you will be able to open the ECU. This ECU's is sometimes very tricky to open so if you tried a couple of times and cant make it - there is also possible to change the chip only by tensening the gray cables. This gives you enough space to make it, but it can be tricky as well. Make sure the chip is put in correct way, as per step 5.



5. The change of the chip.

Use a flat screwdriver to get rid of the plastic cover in left hand image. Then just bend the chip upwards in each end.



6. Put in the Fekzen performance chip in the same direction as the stock chip.

There is a small marker at one of the chis side. Also same marker is at the socket.

I always take a photo everytime before I install a chip to make sure I remember how it was.